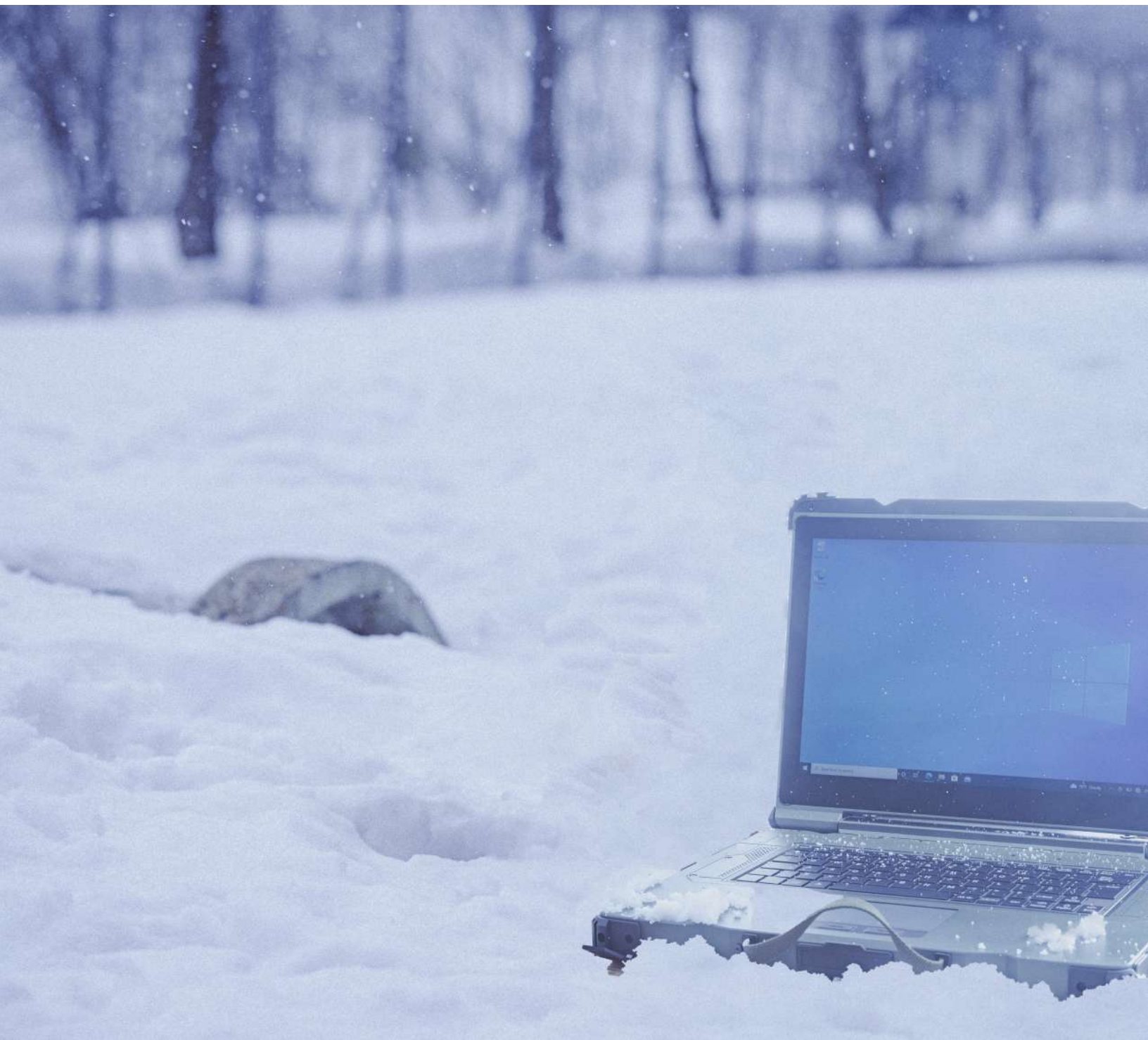


A complete range of rugged solutions



Rugged computers



Maintain good communication in difficult conditions

Military operations often take place in difficult conditions: in the desert heat or arctic cold; in tropical rain or humid jungles; and in arid sandy plains. Not only must computer equipment withstand such tough conditions, but also the shocks and vibration common in military situations.

Mildef Crete is well aware of what defence forces have to face in various theatres of operation, and is dedicated to developing and supplying a variety of rugged computers that help military personnel maintain good communication wherever they are.

An extensive range

We offer an extensive range of rugged computers and associated equipment as presented in this brochure. Most of the units are ideal for use by army, navy and air force personnel, although ground forces represent the biggest application area. Mildef Crete units are found in ground vehicles such as tanks, armed personnel carriers and smaller road vehicles. They are also used in staff headquarters, field tents, and by all ground forces.

As we can satisfy virtually all of your computer equipment requirements, Mildef Crete is the only contact that you need.

Mobile solutions

Mildef Crete products ensure maintaining high situational awareness and the tactical advantage in a combat zone. For example, our Mildef Crete DE13 is a combat-rugged slim tablet built to be used in harsh conditions as a soldier device or in military vehicles and naval vessels, running military applications such as BFT, BMS client and FAC.

The Mildef Crete DE13 is equipped with all the technology you need in such situations and can be customized to meet customer requirements. It has high brightness LCD multi-touch screen, and complies with several common standards, including MIL-STD-810G, MIL-STD-461G and IP67.

Customized units

As Mildef Crete is a flexible and very service-minded company, we respond quickly to customer demands. We can rapidly customize units to exacting standards

and deliver them within tight time frames, whether it only concerns a few tailored products or hundreds of units. Computers can be modified and equipment connectors changed to suit your complete system. In addition, our accessories enhance the performance of our computer equipment. Naturally, they are designed for tight integration with our products.

As you would expect, our development department uses the latest technology in the design, development and manufacture of our product range and in customizing computers for our customers.

We have our own EMI chamber where we can test products and verify their performance after modification or upgrades.

Compliance and Military Standards

As we are familiar with the extreme conditions under which military computer equipment operates, we use only the high-quality designs and materials necessary to protect and maintain long-term functionality and reliability. We are certified according to ISO 9001:2015 regarding design, development and production. We are also ISO 14001:2015 certified, and our care for the natural environment forms an important part of our business strategy.

All our units are built to comply with tough military standards to further ensure their high performance over long equipment lifecycles. They are, at a minimum, true IP54 products as well as fulfilling MIL-STD-810 and MIL-STD-461.

Sustainable products

A key consideration taken into account when designing new equipment is to make it sustainable and highly reliable. This satisfies the demand of defence equipment purchasers for the long-term stable supply of particular types of equipment. Such sustainability also matches the long lifecycles of most military vehicles and aircraft, and the need to continually update systems. Typical Mildef Crete features that promote sustainability and cost-effectiveness are a form factor that remains the same even if computers are updated, a computer lifecycle of up to ten years, and lifetime support for all Mildef Crete units.

Handhelds

DF10

Specifications:

CPU: MEDIATEK i350 (MT8365)

ARM Cortex-A53 Quad Core 2.0 GHz

Display: 5.7" 720 × 1280 LED backlit

Display brightness: 640 nits

Touch-screen: Resistive multi-touch

Memory: 3GB RAM(LPDDR4), 128GB ROM (eMMC)

Graphics: Mali-G52 3EEE MC1 (OpenGL/ES 3.2/2.0/1.1)

Battery: 3.7V Li-ion (3750mAh, hot-swappable)

Sensors: Magnetic, Accelerometer, Gyro, Proximity & Light

Operating System: Android™ 12

Temperature operational: -20°C to +60°C (-4°F to 140°F)

Temperature storage: -40°C to +70°C (-40°F to 158°F)

Dimensions (W × H × D): 184 × 90 × 23 mm (7.24 × 3.54 × 0.9 inch) w/ bumper

Weight: 440 g (0.97 lb) w/ battery

Compliant to: CE, FCC, UKCA, RCM, WEEE, REACH, RoHS 2.0, IP67 and MIL-STD-810H



Ports and connectors:

1 × MicroSD

1 × USB Type C

(BC1.25V/1.5A/PD9V/3A)

Options and accessories:

1x USB2.0 Host (Fischer)

1x Mega LAN (Fischer)

1x RS232 (Fischer)

1x VGA (Fischer)

1 x Audio (Fischer)

Double capacity battery

MIL-STD-461G Ground Navy

MIL-STD-461G Ground Army

DH8

Specifications:

CPU: Intel® Atom™ x6211E (1.5M Cache, 3GHz)

Display: 5.7" 1280 × 720 LED backlit

Display brightness: 640 nits

Touch-screen: Resistive multi-touch

Memory: Up to 32GB DDR4 3200 MHz

Storage: Removable M.2 2242 SATA III SSD

Graphics: Intel® UHD Graphics

Battery: 7.2V Li-ion x2 (2700mAh, hot-swappable)

Audio: HD audio codec and amplifier, stereo speaker,

Optional embedded digital mic

Security: TPM 2.0

Operating System : Windows 10

Temperature operational: -20°C to +60°C (-4°F to +140°F)

Temperature storage: -40°C to +70°C (-40°F to 158°F)

Dimensions (W × H × D): 201 × 99 × 45 mm

(7.91 × 3.9 × 1.75 inch) w/ bumper

Weight: ~905 g (1.99lb) w/ battery

Compliant to: CE, FCC, UKCA, RCM, WEEE, REACH, RoHS2.0, IP65 and MIL-STD-810H



Ports and connectors:

1 × USB 3.2 Gen 2 Type C

(PD3.0 20V/3A)

1 × Docking connector

(1 × USB 3.2, 1x USB2.0

5V, GND)

Options and accessories:

1 × DC-in (built-in 12-32 V DC)

1 × Audio & mic (Fischer)

1 × USB2.0 (Fischer)

1 × Giga LAN (Fischer)

1 × COM: RS232/422/485

BIOS Selectable (Fischer)

WiFi6/Bluetooth® 5.3 (Intel AX210)

GNSS (uBlox M9N)

Multi-battery charger

IP67

-30°C/-22°F Operating Temp

MIL-STD-461G Ground Navy

MIL-STD-461G Ground Army

Tablets

DS13

Specifications:

CPU: Intel® Core™ i7-7Y75
(4M Cache, up to 3.60GHz)
Display: 10.1" 1920 × 1200 LED backlit
Display brightness: 800 nits
Touch screen: Resistive multi-touch screen
Memory: 16GB DDR3 1866MHz
Storage: Removable mSATASSD
Sensors: Light sensor, accelerometer/magnetometer/gyroscope
Graphics: Intel® HD Graphics 615
Battery: 10.8V Li-ion (4560mAh)
Audio: HD Audio and mono speakers, embedded digital mic
Operating System: Windows 10
Operating temperature: -20°C to +60°C (-4°F to 140°F)
Storage temperature: -40°C to 70°C (-40°F to +158°F)
Dimensions (W × D × H): 280 × 193 × 27 mm
(11.0 × 7.6 × 1.0 in) w/ bumpers
Weight: 1.5 kg (3.06lb)
Compliant to: CE, FCC, UKCA, RCM, WEEE, REACH, RoHS2.0, IP65 and MIL-STD-810G



Ports and connectors:

1 × RJ45 Giga LAN (trade-off DisplayPort)	1 × GLAN/Mini DisplayPort/USB3.1
1 × Mini DisplayPort	1 × USB 2.0 (Fischer)
2 × USB 3.1	1 × VGA (Fischer)
1 × Docking connector (POGO)	2 × COM (Fischer) (RS232 x2 or RS232 x1/RS422 x1)
1 × Micro SD	1 × GLAN (Fischer)
1 × SIM Card Slot	1 × Audio (Fischer)
1 × DC in 12–32 V	1 × Sealed Headset (Fischer)

Options and accessories:

WiFi 802.11 a/b/g/n/ac	-30 °C Operating Temperature
Bluetooth® 5.0	Dual GLAN Card
GNSS	Double capacity battery
Invisible mode	10.8V Li-ion (9120mAh)
AMG sensor	MIL-STD-461G Ground Navy
	MIL-STD-461G Ground Army

DK13

Specifications:

CPU: Intel® Core™ i7-7600U
(4M Cache, up to 3.90 GHz)
Display: 12.1" 1024 × 768 LED backlit
Display brightness: 650 nits
Touch screen: Resistive single-touch
Memory: Up to 32 GB DDR4 2400/2666 MHz
Storage: Removable 2.5" SATA III SSD
Graphics: Intel® HD Graphics 620
Battery: 10.8V Li-ion (9125mAh)
Operating System: Windows 10
Operating temperature: -20°C to +50°C (-4°F to +122°F)
Storage temperature: -40°C to +70°C (-40°F to +158°F)
Dimensions (W × D × H): 310 × 255 × 54 mm
(12.2 × 10.0 × 2.1 inch) w/ bumpers
Weight: 2.8 kg (6.17 lb) w/ battery
Compliant to: CE, FCC, UKCA, WEEE, REACH, RoHS2.0, IP65
(without I/O caps) and MIL-STD-810G



Ports and connectors:

1 × Serial (DB9)
(COM1: RS232/422/485 BIOS Selectable)
2 × USB 3.1 Type A
1 × RJ45 Giga LAN
1 × Docking connector (120 pins)
1 × MIL DC in 12–32 V
2nd battery connector
Multibay w/ 1 × ExpressCard
Slot & 1 × SIM Card/SD Card slot

Options and accessories:

GNSS
Bluetooth® 5.0 WLAN a/b/g/n/ac
Docklite (DL10)
Stand for vehicle mounting
2nd battery 10.8V Li-ion (9100mAh)
TPM 2.0
-30°C/-22°F Operating temperature
MIL-STD-461G Ground Navy
MIL-STD-461G Ground Army

DR13

Specifications:

CPU: Intel® Core™ i7-7600U
(4M Cache, up to 3.90GHz)
Display: 8.4" 1024 × 768 LED backlit
Display brightness: 750 nits
Touch screen: Resistive single-touch
Memory: Up to 32 GB DDR4 2400/2666 MHz
Storage: Removable 2.5" SATA III SSD
Graphics: Intel® HD Graphics 620
Battery: 10.8V Li-ion (5300mAh)
Operating System: Windows 10
Operating temperature: -20°C to +50°C (-4°F to +122°F)
Storage temperature: -40°C to +70°C (-40°F to +158°F)
Dimensions (W × D × H): 250 × 190 × 45 mm
(9.84 × 7.48 × 1.78 in) w/ bumpers
Weight: ~2.3 kg (~5.07 lb) w/ battery
Compliant to: CE, FCC, UKCA, WEEE, REACH, IP54, RoHS2.0 and MIL-STD-810G



Ports and connectors:

1 × Serial (DB9)
2 × USB 3.1 Type A
1 × RJ45 Giga LAN
1 × Docking connector
(COM2/3, USB 2.0, Mic, Speaker, Line-in, VGA, PS2, DVI, Giga LAN)
1 × MIL DC-in 12–32 V
1 × 2nd battery connector
Multibay w/ 1 × ExpressCard
Slot & 1 × SIM Card/SD Card slot

Options and accessories:

GNSS
Bluetooth® 5.0
WLAN a/b/g/n/ac
Docklite (DL10)
Stand for vehicle mounting
2nd battery 10.8V Li-ion (9100mAh)
TPM2.0
Invisible mode
-30°C/-22°F Operating temperature
MIL-STD-461G Ground Navy
MIL-STD-461G Ground Army

Laptops

RS13

Specifications:

CPU: Intel® Core™ i7-7600U (4M Cache, up to 3.90 GHz)
Display: 13.3" 1920 × 1080 LED backlit
Display brightness: 300 nits
Memory: Up to 32 GB DDR4 2400/2666 MHz
Storage: Removable 2.5" SATA III SSD
Graphics: Intel® HD Graphics 620
Battery: 11.1V Li-Polymer (6040mAh)
Input devices: 83-key backlit keyboard, resistive single-touch touchpad
Audio: HD Audio and stereo speakers, embedded digital mic
Operating System: Windows 10
Operating temperature: -20°C to + 60°C (-4°F to +140°F)
Storage temperature: -40°C to +70°C (-40°F to +158°F)
Dimensions (W × D × H): 338 × 265 × 32 mm (13.31 × 10.43 × 1.24 in) w/ bumpers
Weight: 3.2 kg (5.51 lb) w/ battery
Compliant to: CE, FCC, UKCA, WEEE, REACH, IP65, RoHS2.0 and MIL-STD-810G



Ports and connectors:

1× Display port or VGA port
 1× SIM Card Slot
 1× Serial port (DB9)
 1× USB 3.1 (USB-IF BC V1.2 for 1.5 A fast charger)

1× USB 3.1
 1× RJ45 Giga LAN
 1× MIL DC in 12-32 V

Options and accessories:

1×2nd RJ45 Giga LAN
 1× Giga LAN (Fischer)
 1×VGA (Fischer)
 1-2× Serial I/O RS232/RS422 (Fischer)
 1× Audio (Fischer)
 1× USB 2.0 (Fischer)

1× Docking connector (POGO)
 TPM2.0
 WLAN 802.11 a/b/g/n/ac
 Bluetooth® 5.0
 -30°C/-22°F Operating Temperature
 MIL-STD-461G Ground Navy
 MIL-STD-461G Ground Army

Workstations

RK15

Specifications:

CPU: Intel® Xeon® W-11865MLE Processor
Security: TPM2.0
Display: 15" UXGA (1600 x 1200) LCD
Display brightness: 900 nits
Memory: Up to 64 GB DDR4 3200 MHz
Storage: Removable Sealed SSD Housing (1st SSD)
 Std: M.2 PCIe 3.0 SSD (256GB-1TB)
Operating System: Windows 10
Graphics: Intel® UHD Graphics
Battery: 10.8V Li-ion (8700mAh)
Input devices: 83-key with Backlight
Audio: HD Audio and Stereo Speakers
Operating temperature: -20°C ~ +55°C
Storage Temperature: -40°C ~ +70°C
Dimensions: 353 x 301 x 79 mm
Weight: 5.5 kg(12.13lb)
Compliant to: CE,FCC,UKCA,RCM,WEEE,REACH,RoHS2.0,IP65 and MIL-STD-810H



Ports and connectors:

2 x 2.5G LAN RJ45
 2 x USB 3.2 Gen.2
 2 x USB 2.0
 3 x Audio Jack
 (Line-In/ Microphone/ Headphone)
 1 x DC-in Conn

1 x Docking Connector
 1 x VGA port
 1 x Display Port++
 1 x DVI Port
 2 x Serial Port DB9

Options and accessories:

1 x Flex Bay with signals: SATAIII x1, PCIe x1, USB 3.2 Gen.1 x1, 2nd battery, COM x1, LAN x1 ,ODD
 2nd Battery 10.8V Li-ion (9100mAh)
 Removable Sealed SSD Housing (2nd SSD/M.2 PCIe 3.0 SSD (256GB-1TB)
 1 x Express Card Slot
 2 x Serial Port DB9 Resistive Single
 Touch Panel

Intel® Wi-Fi 6E AX210
 Bluetooth® 5.3
 GPS/GLONASS/Galileo/Beidou
 Multi Battery Charger MCRK for Battery
 Wide Temp -30°C ~ +55°C
 DC-in 12-32V BVA & Surge Protector Module
 MIL-STD-461G Ground Navy
 MIL-STD-461G Ground Army
 Smart Card Reader

Accessories

Here you'll find a selection of accessories to compliment your MilDef Crete computer. Please contact your local MilDef Crete office to discuss your needs and requirements.

DockLite (DL10) (option for DK, DR and DT)

Connections:

- 1× RJ45 GigaLAN
- 2× USB 2.0
- 2× Sealed MIL USB 2.0
- 1× VGA (DB15)
- 2× RS232(DB9)
- 1× MIL DC in with surge protection
- 1× Audio Out
- 1× Mic



Stand Unit (DR/DK) (option for DR Series Tablets)

Specifications:

- Adjustable in all directions.
- Dimensions:** 270×300×160mm
(10.6×11.8×6.3in) (W×H×D)
- Weight:** 2 kg (4.4 lb)



Ext. DC-DC Adapter (EVA 1275) (option for all computers)

Specifications:

- DC Input Range: 12 ~ 32V
- DC Output Voltage: 19V
- Output Current: 5A (at 28V Input Voltage)
- RippleVoltage: 200 mA

Temp operating:

- 20 to +50°C (-4°F to +122°F)

Temp storage:

- 40 to +70 °C (-40°F to +158°F)

- Dimensions:** 137(L) x 64(W) x 39(H) mm

- Weight:** 600g (1.4 lb)



length without cables

Ext. DC-DC Adapter (EVA 19040) (option for all computers)

Specifications:

- DC Input Range: 12 ~ 32V
- DC Output Voltage: 19V
- Output Current: 4A (at 28V Input Voltage)
- RippleVoltage: 200 mA

Temp operating:

- 20 to +50°C (-4°F to +122°F)

Temp storage:

- 40 to +70 °C (-40°F to +158°F)

- Dimensions:** 137 (L) x 77 (W) x 39 (H) mm

- Weight:** 600g (1.4 lb)



length without cables

Battery Chargers

Model : MCRW

(option for RW & RB Laptop)



Model : MCRK

(option for RK Laptop)



Model : MCDH

(option for DH Handheld)



Model : SCDS

(option for DS Tablet)



Accessories

Here you'll find a selection of accessories to compliment your MilDef Crete computer. Please contact your local MilDef Crete office to discuss your needs and requirements.

Docking Station (DURS) (option for RS Series Laptop)

Specifications:

2x RS232* (DB9) *optional RS422 & RS485

1x USB2.0

1x USB3.0.

1x VGA (DB15)

1x Megabit LAN (RJ45)

1x Gigabit LAN (RJ45)

Temp operating: -20 to +50°C (-4°F to +122°F)

Temp storage: -40 to +70 °C (-40°F to +158°F)

Dimensions: 386 × 330 × 54 mm (15.2 × 13.0 × 2.1 inch) (W× H× D)

Weight: 3.15 kg (6.95 lb)



Rugged Backlight Keyboard

Model name: RBK10

Specifications:

USB interface, 83 key layout with Windows key (backlight), Sealed silicon rubber keypad, Metal and Engineering plastic

Full travel: 1.5 mm

Dimensions: 306 × 154 × 13 mm (12.0 × 6.1 × 0.51 in) (W× D × H)

Weight: 860 g (1.9 lb)

Operating force: 60+/-20 g

Life Cycle: > 1 million times

Certifications: CE/FCC/UKCA/RCM

Designed to meet: IP66, MIL-STD-461G (option) and MIL-STD-810H

Temp operating: -20 to +60 °C (-4°F to +140°F)

Temp storage: -40 to +70 °C (-40°F to +158°F)



Goanna Rugged Keyboard

**Exclusively in Australia Region

Model name: TRKB01

Specifications:

USB interface, 83 key layout with Windows key (backlight), Sealed silicon rubber keypad, Plastic

Full travel: 2 mm

Dimensions: 323 × 172 × 25 mm (12.7 × 6.7 × 0.98 in) (W×D×H)

Weight: 1.1 kg (2.43 lb)

Operating force: 60+/-20 g

Life Cycle: > 1 million times

Certifications: CE/FCC

Designed to meet: IP54

Temp operating: -20 to +60 °C (-4°F to +140°F)

Temp storage: -40 to +70 °C (-40°F to +158°F)



External Keyboard KE98B

Specifications:

89 key layout (emulates 101/102 keys)

Windows keys, Elastomer keys (backlight)

Operating force: 60 +/-20 g

Full travel: 2 mm

Life: > 1 million times

Weight: 1.2 kg (2.6 lb), 1.7 kg (3.7 lb) with rubber plate (option)

Size of the key caps part: 275×100 mm (10.8×3.9 in)

Size of the keyboard:

325×172 mm (12.8×6.7 in) (W×D)

Designed to meet: IP54,

MIL-STD-461F (option) and MIL-STD-810G

Temp operating: -20 to +50 °C (-4°F to +122°F)

Temp storage: -30 to +70 °C (-22°F to +158°F)



Quokka Rugged Mini Keyboard

**Exclusively in Australia Region

Model name: TRKB01-Mini

Specifications:

USB interface, 66 key layout with Windows key (backlight),

Stick Pointer, Aluminum-magnesium alloy

Dimensions: 190 × 90 × 12 mm (7.5 × 3.5 × 0.5 in) (W×D×H)

Weight: 165 g (0.36 lb)

Operating force: 130 +/-20 g

Life Cycle: > 1 million times

Certifications: CE/FCC

Designed to meet: IP55

Temp operating: -20 to +60 °C (-4°F to +140°F)

Temp storage: -40 to +70 °C (-40°F to +158°F)



External Mini Keyboard KBD

Specifications:

66 key layout, backlight, right/left click,

stickpointer, Aluminum-magnesium alloy

Designed to meet: IP55

Certifications: CE/FCC

Dimensions: 190 × 90 × 12 mm (7.5 × 3.5 × 0.5 in) (W×D×H)

Weight: 170 g (0.4 lb)

Temp operating: -20 to +50 °C (-4°F to +122°F)

Temp storage: -30 to +70 °C (-22°F to +158°F)



Workstations

RW14

Specifications:

CPU: Intel® Xeon® E-2176M Processor (6 Cores, 12MB Smart Cache, up to 4.40 GHz)

Display: 15.6" (1920 × 1080), LED backlit

Display brightness: 270 nits (optional 800 nits)

Memory: Max. 64 GB, DDR4-2400 (optional ECC DRAM)

Operating System: Windows 10 and Server 2016 & 2019

Graphics: Intel® UHD Graphics P630

Battery: 10.8V Li-ion x2 (5980mAh, hot-swappable)

Storage: Up to 4x SATA III SSD (removable)

Input devices: Resistive touch pad (single touch)

Audio: HD Audio and Stereo Speakers, embedded mic

Operating temperature: -20°C to +60°C (-4°F to +140°F)

Storage temperature: -40°C to +70°C (-40°F to 158°F)

Dimensions (W × D × H): 392 × 302 × 42 mm (15.43 × 11.89 × 1.65 in) w/ bumpers

Weight: 5.3 kg (depending on configuration)

Compliant to: CE, FCC, UKCA, RCM, WEEE, REACH, RoHS2.0

IP65 (without I/O caps) and MIL-STD-810H



Ports and connectors:

4 × SATA III SSD Bay
4 × USB 3.1 Gen. 2
1 × RJ45 Giga LAN
3 × 3.5 mm Audio Jack
(Mic, Line-in/earphone)
1 × DisplayPort (v1.2)
1 × VGA
2 × Serial ports / COM 1 & 2
(RS232/422/485 BIOS selectable)
1 × POGO dock port
1 × MILDC in (DC-19V)

Options and accessories:

800 nits high brightness display
TPM 2.0
2nd RJ45 Giga LAN
GNSS (uBlox Neo-M8N)
WiFi/Bluetooth® 5.0 (Intel® AC9260)
2 × Serial ports / COM 3 & 4
(RS232/422/485 BIOS selectable)
1 × Mini-Flex bay
(trade-off with 3rd~4th SSD)
Smart Card Reader
Resistive multi-touch screen

NVIDIA GeForce® GTX1050
4GB discrete add-on card*
Surge protector/BVA module
(DC-12-32V)
-30 °C Operating Temperature
MIL-STD-461G – Ground Navy
MIL-STD-461G – Ground Army

Low Temp. Battery: 10.8V
Li-ion (5000mAh)

RB14

Specifications:

CPU: Intel® Xeon® E-2176M Processor (6 Cores, 12MB Smart Cache, up to 4.40 GHz)

Display: 17.3" (1920 × 1080), LED backlit

Display brightness: 1000 nits

Memory: Max. 64GB, DDR4-2400 (optional ECC DRAM)

Operating System: Windows 10 and Server 2016 & 2019

Graphics: Intel® UHD Graphics P630

Battery: 10.8V Li-ion x2 (5980mAh, hot-swappable)

Storage: Up to 4x SATA III SSD (removable)

Input devices: Resistive touch pad (single touch)

Audio: HD Audio and Stereo Speakers, embedded mic

Operating temperature: -20°C to +60°C (-4°F to +140°F)

Storage temperature: -40°C to +70°C (-40°F to 158°F)

Dimensions (W × D × H): 436 × 328 × 52 mm (17.17 × 12.91 × 2.05 in) w/ bumpers

Weight: 7 kg (depending on configuration)

Compliant to: CE, FCC, UKCA, WEEE, REACH, RoHS2.0

IP65 (without I/O caps) and MIL-STD-810H



Ports and connectors:

4 × SATA III SSD Bay
4 × USB 3.1 Gen. 2
1 × RJ45 Giga LAN
3 × 3.5 mm Audio Jack
(Mic, Line-in/earphone)
1 × DisplayPort (v1.2)
1 × VGA
2 × Serial ports / COM 1 & 2
(RS232/422/485 BIOS selectable)
1 × POGO dock port
1 × MILDC in (DC-19V)

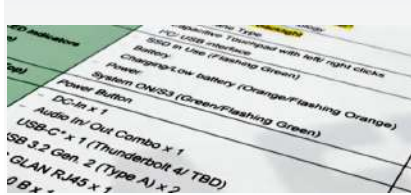
Options and accessories:

TPM 2.0
2nd RJ45 Giga LAN
GNSS (uBlox Neo-M8N)
WiFi/Bluetooth® 5.0 (Intel® AC9260)
2 × Serial ports / COM 3 & 4
(RS232/422/485 BIOS selectable)
1 × Mini-Flex bay
(trade-off with 3rd~4th SSD)
Smart Card Reader
Resistive multi-touch screen

NVIDIA GeForce® GTX1050
4GB discrete add-on card*
Surge protector/BVA module
(DC-12-32V)
-30 °C Operating Temperature
MIL-STD-461G – Ground Navy
MIL-STD-461G – Ground Army

Low Temp. Battery 10.8V
Li-ion (5000mAh)

From concept to creation



Specification

Upon receipt of a customer order a development specification is produced. This specification will ensure that both MilDef Crete and the customer have a common understanding of the required deliverables.

The agreed specification is also the key document on commencement of a detailed design. The development specification is the backbone of the project and will be referred to and reviewed throughout the R&D process.



Design

After the development specification has been approved by the customer, the detailed design work may commence for the mechanical, electronic and software elements. All drawings, layouts, and specifications needed to produce the prototype are prepared

in-house with the support of the latest available systems, such as 3D CAD and PCB layout. Potential design solutions are continuously evaluated with a practice of "Upstream Design" ensuring that MilDef Crete prototypes are in accordance with customer expectations.



Suppliers

MilDef Crete works with both local sub-contractors and global vendors. Key suppliers include CNC (Computer Numerical Control) service suppliers, who machine chassis from single billets of aluminium,

SMA (Surface Mounted Assembly) suppliers, conducting the assembly of PCBs and selected vendors, supplying inter-connectivity solutions especially developed for the defence industry.



Prototype builds

Once suppliers have delivered the parts to MilDef Crete requirements, these are processed through the R&D lab and prototypes are built. The prototypes are always assembled in

co-operation between the R&D engineers and production personnel. This ensures that a volume production perspective is gleaned from an early phase.



Prototype Verification and Validation

MilDef Crete has its own test standard called the MilDef Crete Verification Handbook, which details the minimal tests that are carried out on all prototypes. After prototype assembly,

verification and validation consist of functional, environmental and EMC tests, allied with inspection activities (more extensive testing can be provided on request).



Test Certificate

All tests and inspection activities that are conducted when verifying and validating prototypes are referenced from the requirements laid down in the development specifications.

After verification and validation, a report will be issued proving compliance with the development specification and customer expectations.



Finished Product

For short production runs or custom solutions, MilDef Crete delivers the customer requirement after the prototype has been successfully verified and validated.

For volume products to be built by MilDef Crete the development will continue until the item is verified for serial production.

Designing the solutions of the future

Not every challenge has an off-the-shelf solution. Many of the innovations forces around the world rely on today started out as customization initiatives. Whether it's a few tailored products or hundreds of units, Mildef Crete can help convert a concept for a better solution into reality with speed and efficiency.

Such projects generally involve modifying computers and connectors, designing a space-saving setup and enhancing units with a huge range of accessories. Mildef Crete is also capable of integrating data security solutions and tempest requirements. Every new unit is tested in an EMI chamber to ensure it meets all the required standards.

Innovation at work

Thousands of Mildef Crete solutions are in operation around the world. The German Army is using 2,500 customized Mildef Crete units in their FüInfoSys Heer battle management system. Airbus in France have equipped all of their A400 military transporters with portable maintenance access terminals (PMATs) built from Mildef Crete III and RK886s.



Custom built solutions



MilDef Crete Design House

MilDef Crete offers its customers complete realisation of their product ideas or concepts. This is achieved by experienced and well-motivated personnel, who

have a clear understanding of what is required to convert a customer's idea into a finished product. Mildef Crete focuses on cost, quality and time for both high and low volume products and solutions.

Enhancing military communication



Mildef Crete is an international company at the forefront of designing, developing and manufacturing combat-rugged computers and special electronics for communication in extreme environments where reliability, robustness and high performance are crucial.

Our offer includes a battle-field mobile computers that saves significant space and enables more functionality, customized communication units of this form factor, and special electronics based on your own specifications and dedicated to your particular needs.

We also supply the Mildef Crete range of communication products, including Workstations laptops, tablets and Handhelds. Our equipment complies with up to IP67, MIL-STD-810 and MIL-STD-461. We are certified according to ISO 9001:2015 regarding design, development and production. Naturally, we provide all the service required for individual units and provide them with lifetime support. Our environmental program is guided by our ISO 14001:2015 certification.

In close cooperation with you, Mildef Crete is dedicated to reshaping your communication power.

MilDef Crete Inc.

📍 7F, No.250, SEC.3, PEI SHEN RD. ShenKeng District,
New Taipei City 22204, Taiwan (R.O.C.)

☎ +886 2 2662 6074

✉ enquiry@mildefcrete.com

🌐 www.mildefcrete.com



MilDef Crete Inc.



MilDef Crete Australasia

MilDef Crete Australasia Pty Ltd.

📍 Level 5, 7 Eden Park Dr, Macquarie Park, NSW
2113, Australia

☎ +61 2 8527 2542

✉ enquiry@mildefcrete.com.au

🌐 www.mildefcrete.com.au

